

# How to Connect Your iPad to your Apple TV

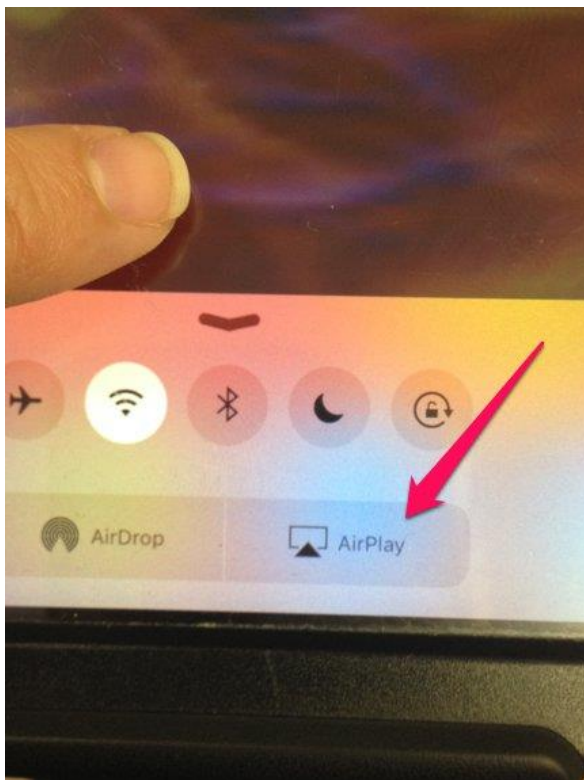
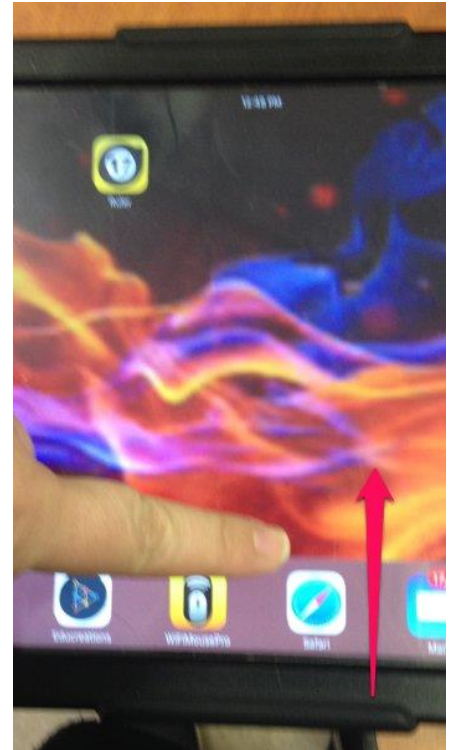
First, turn on your projector.

Next, on your projector remote, hit the Video button until you see HDMI in the upper right hand corner of your projection screen.



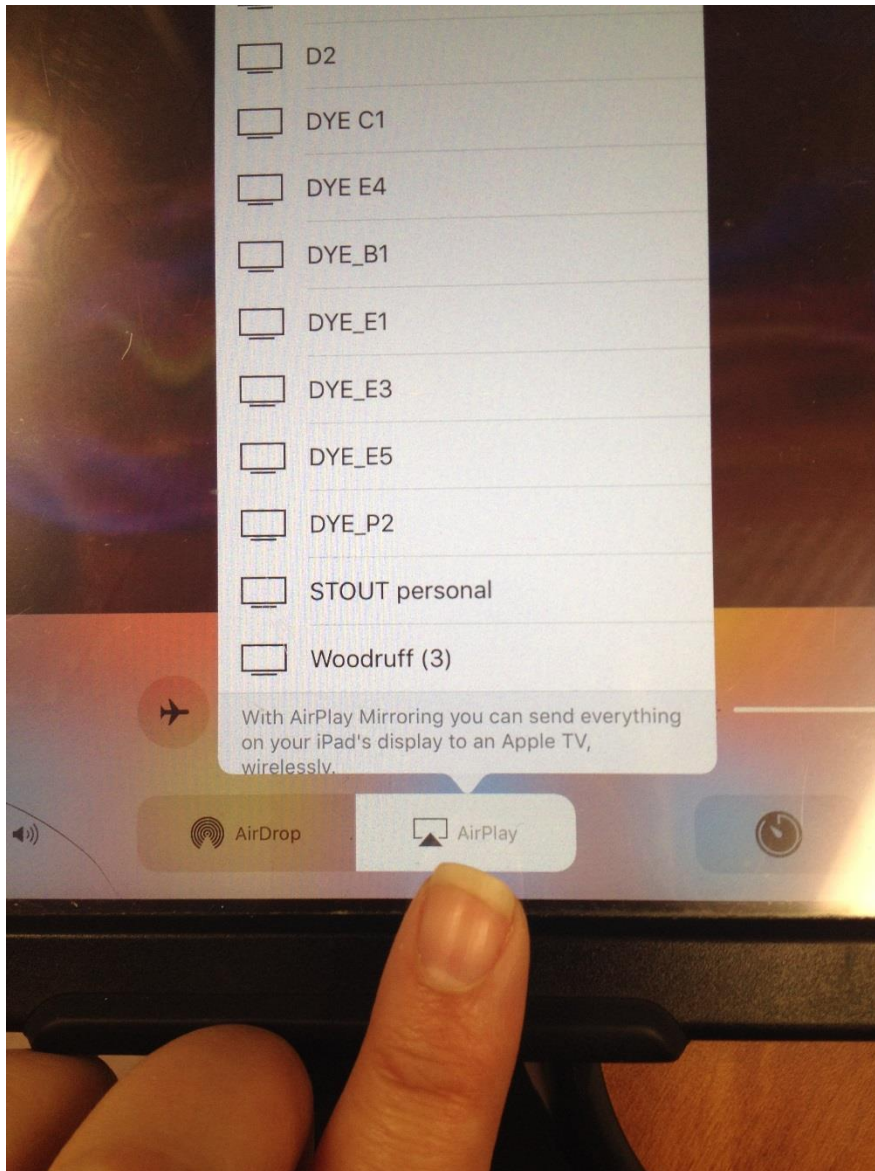
On your iPad, pull up from the bottom of the screen toward the top

until you see  
a gray bar show up –  
you are looking for the “Air Play” button

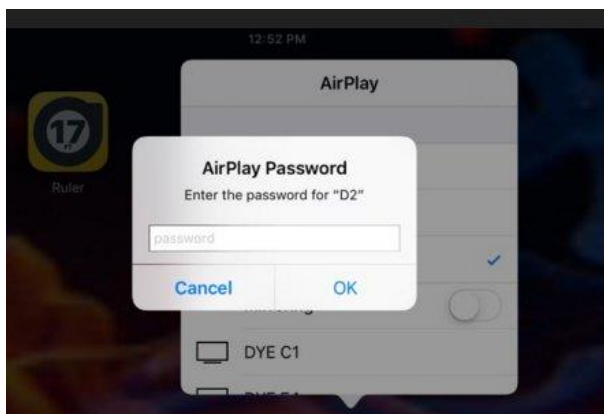


Touch Airplay, and you will now see a list of all the Apple TV's installed in the building.

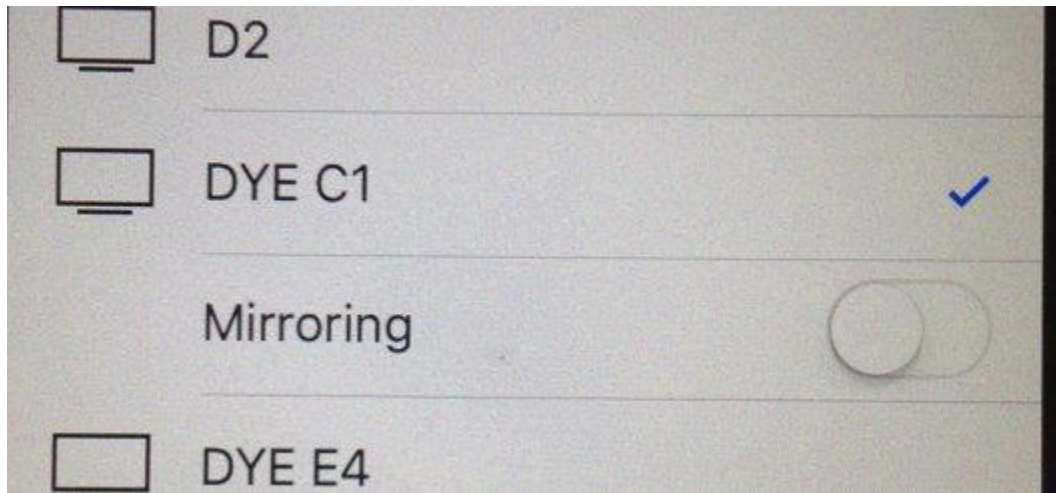
Touch your room number:



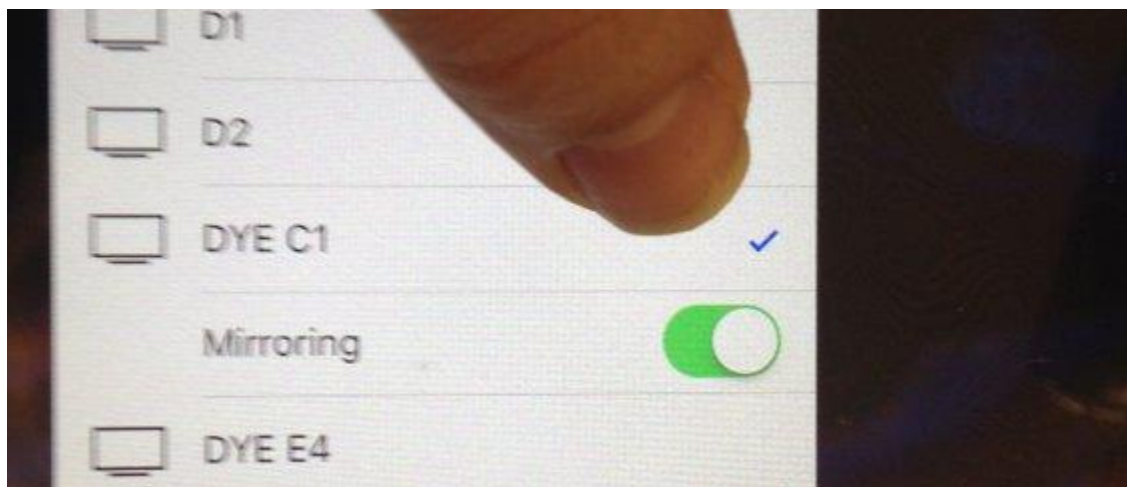
A message will pop up asking for the password – type that in:



This will show up now when you click your room number -



Turn the "Mirroring" on by swiping the round button to the right



Now, you will see whatever you have showing on your iPad on the projector screen!

